

RANGE COMPOSITION

The range consists of a base model LB1 available in 4 versions: standard; with water softener; with water softener and drain pump; with water softener, drain pump and rinse pump.



402000

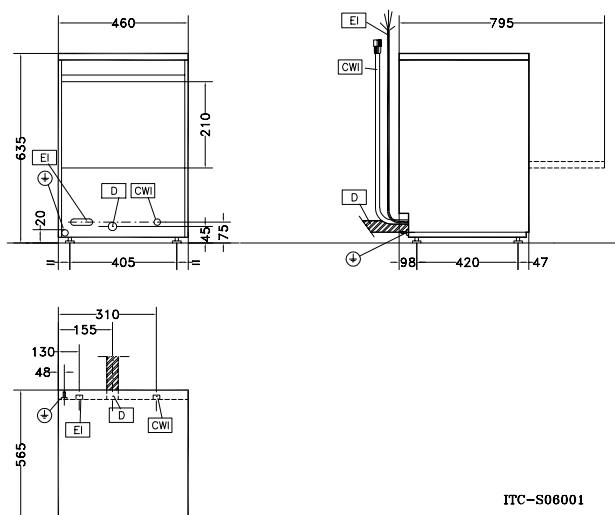
LB-1

GLASSWASHERS ZANUSSI PROFESSIONAL

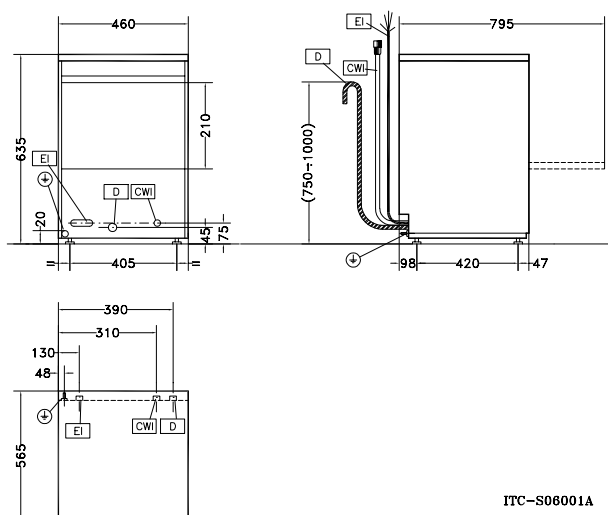
FUNCTIONAL AND CONSTRUCTION FEATURES

- ◆ A high standard of washing, rinsing and hygiene is achieved.
- ◆ All versions can be made to carry out a cold rinse after the hot rinse to ensure that glasses are ready for use as they do not leave the appliance hot.
- ◆ Two cycles (120 and 300 seconds); the longer cycle allows the washing of crockery with a higher degree of soil.
- ◆ Glasses, cups and crockery up to a height of 190 mm can be washed.
- ◆ 5 litre capacity boiler, washing temperature 55° to 65°C and rinse temperature 80° to 90°.
- ◆ Double-walled washing chamber and tank.
- ◆ Separate washing and rinsing circuits.
- ◆ Load bearing frame, side and front panels, tank and filter, washing and rinsing arms and jets in 304 AISI stainless steel.
- ◆ Upper and lower rotary washing arms and rinsing arms.
- ◆ Frontal access to the main components: boiler elements, thermostats, timer, rinse aid dispenser and electrical components.
- ◆ Basket, for glasses 100 mm in height, plus the insert rack for plates and cutlery, electric cable and the hose for water connection supplied as standard.
- ◆ All models comply with the standards of the main international approval bodies and are CE

| TECHNICAL DATA | | | | |
|---|---------------|-----------------|-------------------|------------------|
| CHARACTERISTICS | MODELS | | | |
| | LB1 402000 | LB1WS 402001 | LB1WSWP 402002 | LB1TOP 402018 |
| Water supply | | | | |
| temperature - °C | 10 | 10 | 10 | 10 |
| hardness - °f | 7-14 | >14 | >14 | >14 |
| Cold rinse | ● | ● | ● | ● |
| Water softener | | ● | ● | ● |
| Drain pump | | | ● | ● |
| Rinse Booster Pump | | | | ● |
| N° of cycles | 2 | 2 | 2 | 2 |
| Duration cycles - sec. | 120/300 | 120/300 | 120/300 | 120/300 |
| Basket capacity/h | 30 | 30 | 30 | 30 |
| External dimensions - mm | | | | |
| width | 460 | 460 | 460 | 460 |
| depth | 565 | 565 | 565 | 565 |
| height | 635 | 635 | 635 | 635 |
| Cell dimensions - mm | | | | |
| width | 400 | 400 | 400 | 400 |
| depth | 400 | 400 | 400 | 400 |
| height | 210 | 210 | 210 | 210 |
| Washing cycle | | | | |
| temperature - °C | 55-65 | 55-65 | 55-65 | 55-65 |
| tank capacity - lt. | 6 | 6 | 6 | 6 |
| power pump - kW | 0.3 | 0.3 | 0.3 | 0.3 |
| electrical elements - kW | 0.8 | 0.8 | 0.8 | 0.8 |
| Cold rinse cycle | | | | |
| duration - sec. | 10 | 10 | 10 | 10 |
| temperature - °C | 10 | 10 | 10 | 10 |
| water consumption - lt./cycle | 2 | 2 | 2 | 2 |
| Boiler capacity - lt. | 5 | 5 | 5 | 5 |
| Boiler elements - kW | 3 | 3 | 3 | 3 |
| Power - kW | | | | |
| drain pump | | | 0.034 | 0.034 |
| total power | 3.3 | 3.3 | 3.3 | 3.3 |
| Noise level - dBA | <61 | <61 | <61 | <61 |
| Net weight - kg. | 34 | 34 | 34 | 34 |
| Supply voltage | 230 V, 1N, 50 | 230 V, 1N, 50 | 230 V, 1N, 50 | 230 V, 1N, 50 |
| INCLUDED ACCESSORIES | | | | |
| BASKET FOR GLASSES+SAUCERS/CUTLERY INS. | 1 | 1 | 1 | 1 |



ITC-S06001



ITC-S06001A

LEGEND

| | LB1 402000 | LB1WS 402001 | LB1WSWP 402002 | LB1TOP 402018 |
|----------------------------|---------------|-----------------|-------------------|------------------|
| CWI - Cold water inlet | G 3/4" | G 3/4" | G 3/4" | G 3/4" |
| D - Water drain | 22mm | 22mm | 27mm | 27mm |
| EI - Electrical connection | 230 V, 1N, 50 | 230 V, 1N, 50 | 230 V, 1N, 50 | 230 V, 1N, 50 |

OPTIONAL ACCESSORIES

| ACCESSORIES | MODELS | | | |
|---|---------------|-----------------|-------------------|------------------|
| | LB1 402000 | LB1WS 402001 | LB1WSWP 402002 | LB1TOP 402018 |
| BASKET F. GLASSES-ANGLED BASE-395X395X200 | 867056 | 867056 | 867056 | 867056 |
| BASKET FOR GLASSES+SAUCERS/CUTLERY INS. | 867055 | 867055 | 867055 | 867055 |
| BASKET FOR GLASSES-395X395X100 MM | 867053 | 867053 | 867053 | 867053 |
| BASKET FOR GLASSES-395X395X200 MM | 867054 | 867054 | 867054 | 867054 |
| COVER GRID FOR SMALL/LIGHT ITEMS IN RACK | 867016 | 867016 | 867016 | 867016 |
| FILTER FOR PARTIAL DEMINERALIZATION | | | | 864017 |
| FILTER FOR TOTAL DEMINERALIZATION | 864367 | 864367 | 864367 | 864367 |
| INCLINED INSERT FOR CUPS | 867061 | 867061 | 867061 | 867061 |
| INSERT FOR 14 SAUCERS | 867060 | 867060 | 867060 | 867060 |
| INSERT FOR "FLUTE" GLASSES | 867058 | 867058 | 867058 | 867058 |
| KIT 4 PLASTIC BOXES FOR CUTLERY-YELLOW | 865574 | 865574 | 865574 | 865574 |
| KIT TO MEASURE TOTAL/PART.WATER HARDNESS | 864050 | 864050 | 864050 | 864050 |
| RINSE BOOSTER PUMP-SING.TANK PRESSURE DW | | 864051 | 864051 | |
| ROUND BASKET KIT WITH SQUARE FRAME | 867057 | 867057 | 867057 | 867057 |
| YELLOW CUTLERY CONTAINER | 864242 | 864242 | 864242 | 864242 |



www.zanussiprofessional.com